



## Growing Forward 2

A federal-provincial-territorial initiative

### Is it Time for your EFP to be Renewed?

Environmental farm planning is a no charge, confidential, voluntary process available to producers to identify both environmental strengths and potential risks on their farms. As appropriate, it includes a prioritized action plan to reduce the risks.

By conducting a risk assessment, producers will establish the current level of environmental health-related risks to various activities on their farm or ranch. This is accomplished using a specifically designed planning workbook, which the PA will provide. The results of the assessment will identify areas of concern on the farm or ranch that the producer may need to address to reduce environmental risks.

**There are three primary reasons why a producer should update their EFP:**

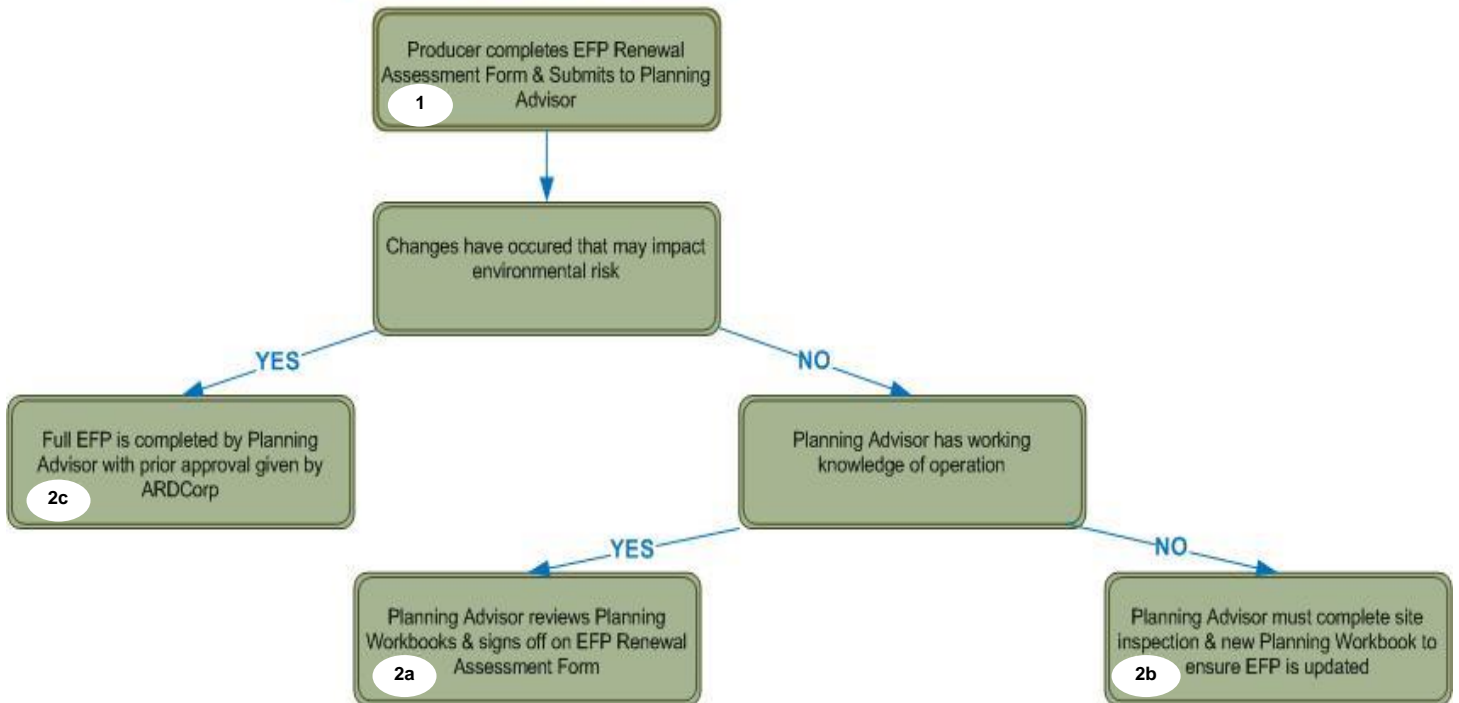
- i. ***The EFP is greater than 5 years old.*** Although there may be no changes that could impact the environmental risks on their operation, there is value in reviewing the current operation to assess any outstanding environmental risks.
- ii. ***There have been legislation changes*** as well as changes in program direction. Legislation and/or program priorities are continually changing or being updated. It is important for producers to be current and aware of these changes.
- iii. ***There have been changes to the operation that could impact the environmental risks*** on a producer's operation. Changes in acreage, animal numbers or enterprise type may have changed the operation's environmental risk, these new risks should be identified and appropriate BMP's identified to help mitigate these risks.

*In order for your farming operation to be eligible for Beneficial Management Practices (BMP) funding under Growing Forward 2, you must have a current EFP (less than 5 years old).* The renewal of an EFP does not reset the funding cap associated with your farming operation, but does allow access to unused funding within the cap.

A renewed EFP may contain new land, an increased number of livestock or a completely different farming enterprise, but only the existing operation as of January 1, 2008 will be eligible for BMP funding. BMP funding will be prorated according to the difference between the current operation and what existed in January 1, 2008.

The following page outlines the steps required for the EFP Renewal Process to be complete. If you have any questions, please contact your local Planning Advisor (contact information attached), or the ARDCorp office at (604) 854-4483 or 1-866-522-3447 or [efpinfo@ardcorp.ca](mailto:efpinfo@ardcorp.ca).

## EFP RENEWAL FLOW CHART



### **Step 1: Self Assessment**

The producer contacts the Planning Advisor (or the ARDCorp office) and indicates that he would like to renew his/her EFP. The updated planning materials as well as the EFP Renewal Assessment Form will be mailed or delivered to the producer. The producer completes the current version of the workbook and the EFP Renewal Assessment Form. The producer then submits the old workbook, the current workbook and the Renewal Assessment Form to the Planning Advisor. The EFP Renewal Assessment Form requires the producer to provide a description of his operation, and identify if there has been a change that could impact the environmental risks on their operation. (eg. greater than 30% change in acreage or animal numbers and if there has been a change in enterprise). The producer signs a declaration stating that they have reviewed the materials. This is then submitted to the Planning Advisor.

### **Step 2a: No Changes that could impact the Environmental Risks on their operation and Working knowledge of the operation by the Planning Advisor**

If the producer acknowledges that there has been no change in operation and the Planning Advisor has current working knowledge of the operation and its activities, the Planning Advisor reviews the current and old Planning Workbook and signs off on the EFP Renewal Self Assessment Form.

### **Step 2b: No Changes that could impact the Environmental Risks on their operation and No working knowledge of the operation by the Planning Advisor**

If the producer acknowledges that there has been no change in the operation but the Planning Advisor does not have current working knowledge of the operation and its activities, then the Planning Advisor will be required to complete a site inspection to verify that the farm operation has not undergone a change to that could have impacted the environmental risks from what was in original EFP.

### **Step 2c: Change that has impacted the Environmental Risk has occurred on their operation**

If the producer completes the EFP Renewal Assessment Form and indicates that there has been a change in their operation (greater than 30% change in acreage or animal numbers and if there has been a change in enterprise) that they believe has impacted their environmental risk, it will automatically result in the need for a full EFP to be completed in the same process as a new EFP.



# ENVIRONMENTAL FARM PLAN

## EFP Planning Advisors

Bruce McTavish	Surrey	604-536-0478
Darrell Zbeetnoff	White Rock	604-535-7721
Dave Melnychuk	Langley	604-534-2639
David Tattam	Duncan	250-746-7666
Dave Zehnder	Invermere	250-342-0325
Duane Holder	Creston	250-428-1742
George Powell	Quesnel	250-983-5114
Heather Meberg	Surrey	604-841-0764
Joe Lariviere	Oliver	250-689-0498
Kari Bondaroff	Arras	250-467-3918
King Campbell	Kamloops	250-833-1503
Laura Grafton	Prince George	250-967-4272
Megan D'Arcy	Telkwa	250-846-9854
Peter Spencer	Kelowna	250-764-0376
Susan Van Der Ende	Vancouver	604-290-1185

**B.C. Agriculture Research & Development Corporation (ARDCorp)**

**604-854-4483**

**Toll Free 1-866-522-3447**

**efpinfo@ardcorp.ca**

**[www.bcefp.ca](http://www.bcefp.ca)**